

VCTS-Z Safety lobe knobs

Technopolymer, push action



KNOB

Glass-fibre reinforced polyamide based (PA) technopolymer. Built-in zinc alloy toothed insert for coupling to the metal clamping element, black colour, matte finish.

CENTRE CLOSING CAP

Black technopolymer centre cap. On request and for sufficient quantities, it can be supplied in yellow RAL 1021 (safety) or in other colours, with customised graphic symbols, marks or writings.

STANDARD EXECUTIONS

The clamping element has a toothed element for coupling to the zinc alloy insert moulded-in the knob.

- **VCTS-Z:** black-oxide clamping element with threaded hole, black-oxide steel retaining screw. AISI 302 stainless steel return spring.
- **VCTS-Z-SST:** AISI 303 stainless steel clamping element with threaded hole, AISI 303 stainless steel retaining screw. AISI 302 stainless steel return spring.
- **VCTS-Z-p:** black-oxide steel clamping element with threaded stud, black-oxide steel retaining screw. AISI 302 stainless steel return spring.
- **VCTS-Z-SST-p:** AISI 303 stainless steel clamping element with threaded stud, AISI 303 stainless steel retaining screw. AISI 302 stainless steel return spring.

FEATURES AND APPLICATIONS

Particularly suitable where the knob needs to turn freely to avoid that clamping may be accidentally affected.

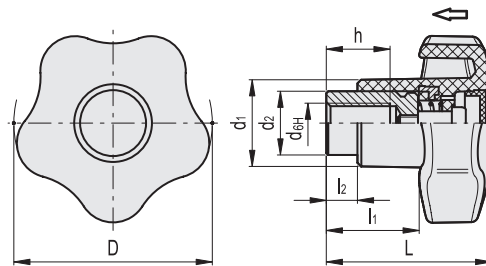
INSTRUCTIONS

Press the knob to engage the tothing and turn it. By releasing the knob the spring releases the tothing, thus the knob returns to the rest position.



ELESA Original design

VCTS-Z
VCTS-Z-SST



Conversion Table	
1 mm = 0.039 inch	
D	
mm	inch
40	1.57
50	1.97

VCTS-Z



Code	Description	D	d	L	d1	d2	l1	l2	h	Teeth no.	⚖️
169631	VCTS-Z-40 A-M6	40	M6	37	18	13.5	22	7	10	24	36
169632	VCTS-Z-40 A-M8	40	M8	37	18	13.5	22	7	10	24	34
169642	VCTS-Z-50 A-M8	50	M8	42	22	16	23	8	14	26	54
169643	VCTS-Z-50 A-M10	50	M10	42	22	16	23	8	14	26	52

VCTS-Z-SST



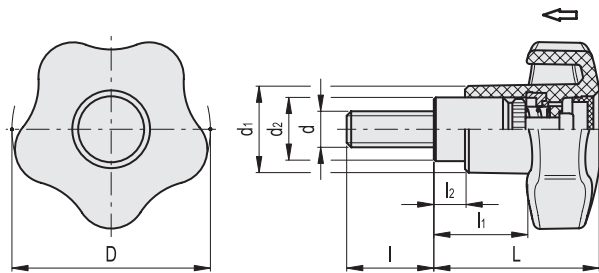
Code	Description	D	d	L	d1	d2	l1	l2	h	Teeth no.	⚖️
169651	VCTS-Z-40-SST-M6	40	M6	37	18	13.5	22	7	10	24	36
169652	VCTS-Z-40-SST-M8	40	M8	37	18	13.5	22	7	10	24	34
169662	VCTS-Z-50-SST-M8	50	M8	42	22	16	23	8	14	26	54
169663	VCTS-Z-50-SST-M10	50	M10	42	22	16	23	8	14	26	52



Clamping knobs

- 1
- 2
- 3
- 4
- 5
- 6
- 7
- 8
- 9
- 10
- 11
- 12
- 13
- 14
- 15

VCTS-Z.p
VCTS-Z-SST-p



Conversion Table 1 mm = 0.039 inch	
D	
mm	inch
40	1.57
50	1.97

METRIC

VCTS-Z-p

Code	Description	D	d	L	d1	d2	l	l1	l2	Teeth no.	Δ
169731	VCTS-Z-40 p-M6x20	40	M6	37	18	13.5	20	22	7	24	40
169732	VCTS-Z-40 p-M6x25	40	M6	37	18	13.5	25	22	7	24	42
169733	VCTS-Z-40 p-M6x32	40	M6	37	18	13.5	32	22	7	24	45
169734	VCTS-Z-40 p-M6x40	40	M6	37	18	13.5	40	22	7	24	50
169741	VCTS-Z-40 p-M8x20	40	M8	37	18	13.5	20	22	7	24	42
169742	VCTS-Z-40 p-M8x25	40	M8	37	18	13.5	25	22	7	24	44
169743	VCTS-Z-40 p-M8x32	40	M8	37	18	13.5	32	22	7	24	47
169744	VCTS-Z-40 p-M8x40	40	M8	37	18	13.5	40	22	7	24	52
169752	VCTS-Z-50 p-M8x25	50	M8	42	22	16	25	23	8	26	58
169753	VCTS-Z-50 p-M8x32	50	M8	42	22	16	32	23	8	26	62
169754	VCTS-Z-50 p-M8x40	50	M8	42	22	16	40	23	8	26	68
169755	VCTS-Z-50 p-M8x50	50	M8	42	22	16	50	23	8	26	74
169762	VCTS-Z-50 p-M10x25	50	M10	42	22	16	25	23	8	26	60
169763	VCTS-Z-50 p-M10x32	50	M10	42	22	16	32	23	8	26	64
169764	VCTS-Z-50 p-M10x40	50	M10	42	22	16	40	23	8	26	70
169765	VCTS-Z-50 p-M10x50	50	M10	42	22	16	50	23	8	26	76

INOX STAINLESS STEEL METRIC

VCTS-Z-SST-p

Code	Description	D	d	L	d1	d2	l	l1	l2	Teeth no.	Δ
169771	VCTS-Z-40-SST-p-M6x20	40	M6	37	18	13.5	20	22	7	24	40
169772	VCTS-Z-40-SST-p-M6x25	40	M6	37	18	13.5	25	22	7	24	42
169773	VCTS-Z-40-SST-p-M6x32	40	M6	37	18	13.5	32	22	7	24	45
169774	VCTS-Z-40-SST-p-M6x40	40	M6	37	18	13.5	40	22	7	24	50
169781	VCTS-Z-40-SST-p-M8x20	40	M8	37	18	13.5	20	22	7	24	42
169782	VCTS-Z-40-SST-p-M8x25	40	M8	37	18	13.5	25	22	7	24	44
169783	VCTS-Z-40-SST-p-M8x32	40	M8	37	18	13.5	32	22	7	24	47
169784	VCTS-Z-40-SST-p-M8x40	40	M8	37	18	13.5	40	22	7	24	52
169792	VCTS-Z-50-SST-p-M8x25	50	M8	42	22	16	25	23	8	26	58
169793	VCTS-Z-50-SST-p-M8x32	50	M8	42	22	16	32	23	8	26	62
169794	VCTS-Z-50-SST-p-M8x40	50	M8	42	22	16	40	23	8	26	68
169795	VCTS-Z-50-SST-p-M8x50	50	M8	42	22	16	50	23	8	26	74
169802	VCTS-Z-50-SST-p-M10x25	50	M10	42	22	16	25	23	8	26	60
169803	VCTS-Z-50-SST-p-M10x32	50	M10	42	22	16	32	23	8	26	64
169804	VCTS-Z-50-SST-p-M10x40	50	M10	42	22	16	40	23	8	26	70
169805	VCTS-Z-50-SST-p-M10x50	50	M10	42	22	16	50	23	8	26	76

Clamping knobs